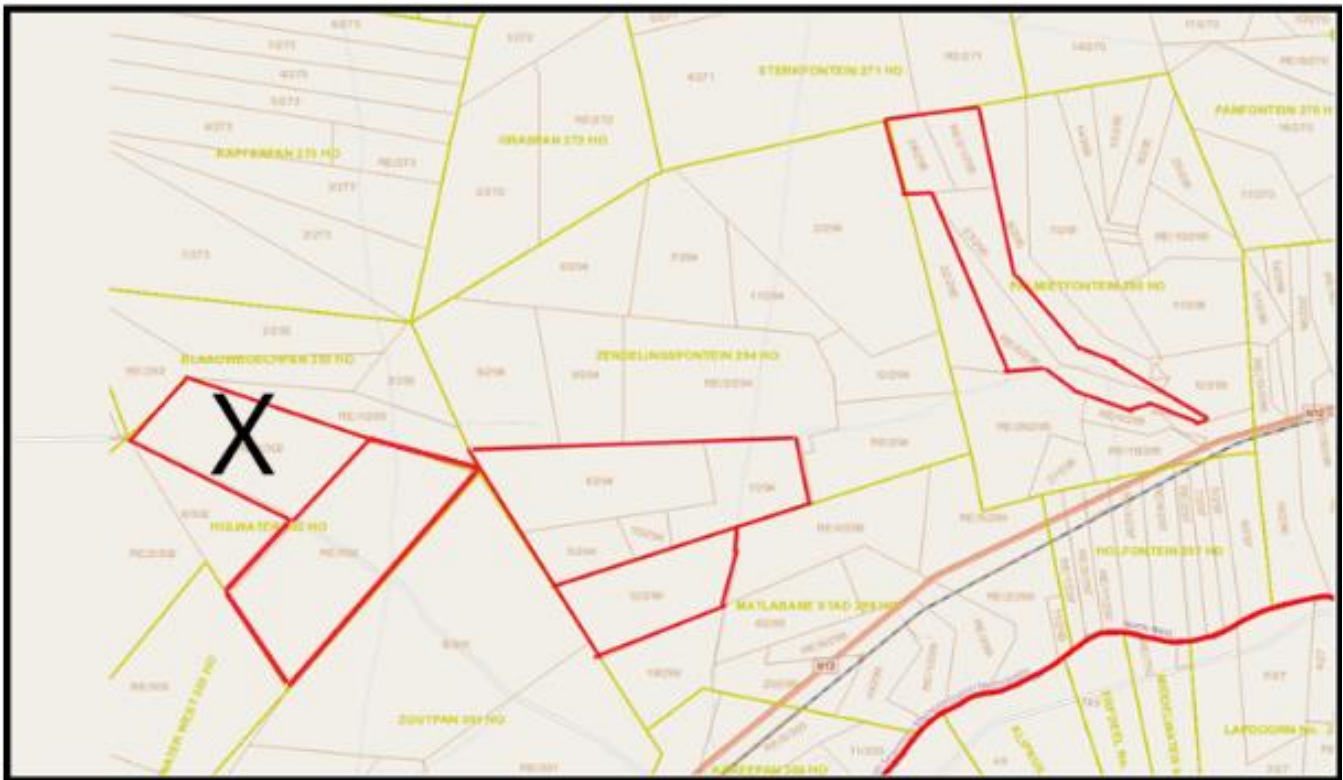
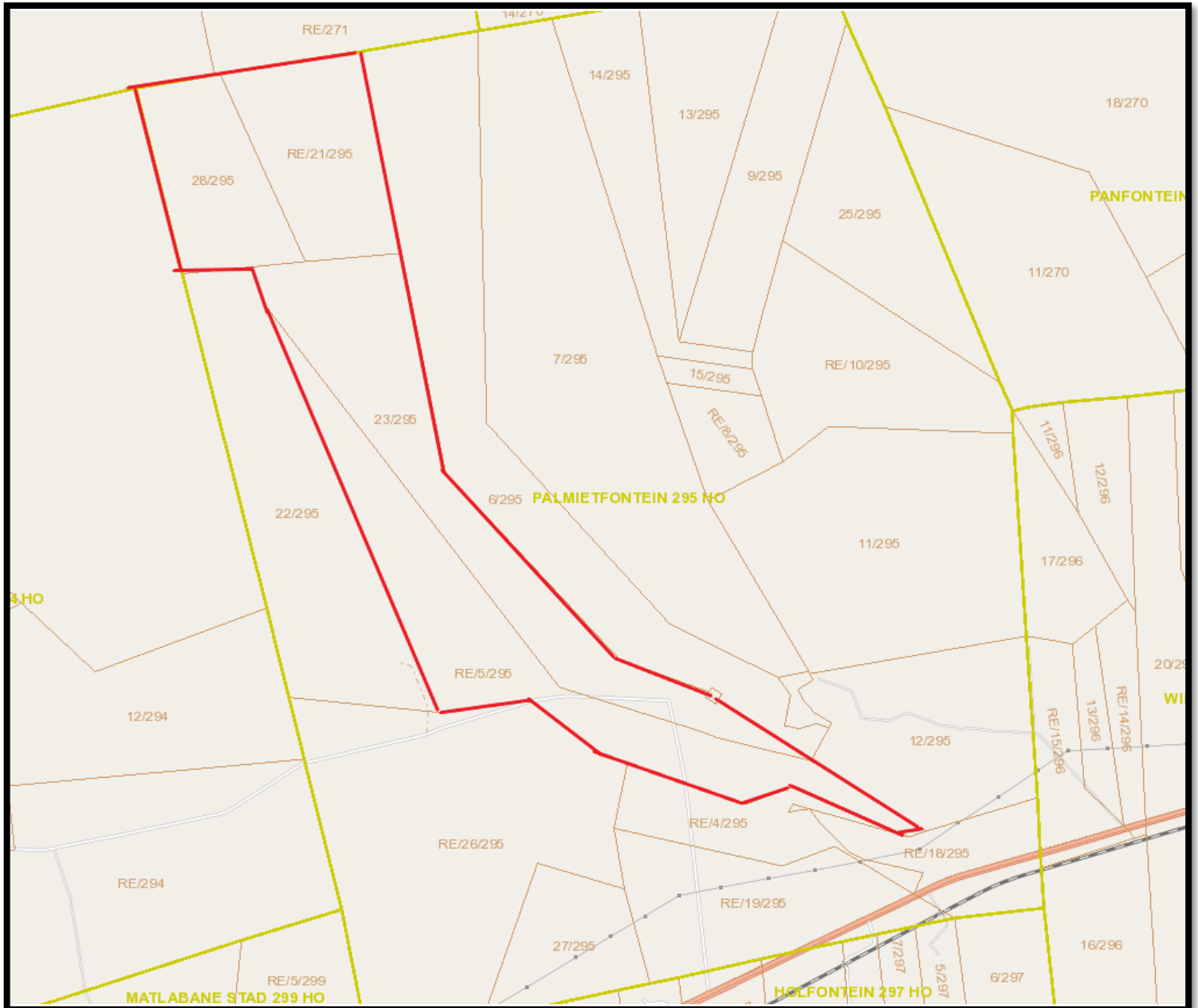


BLOEMHOF FARMS:



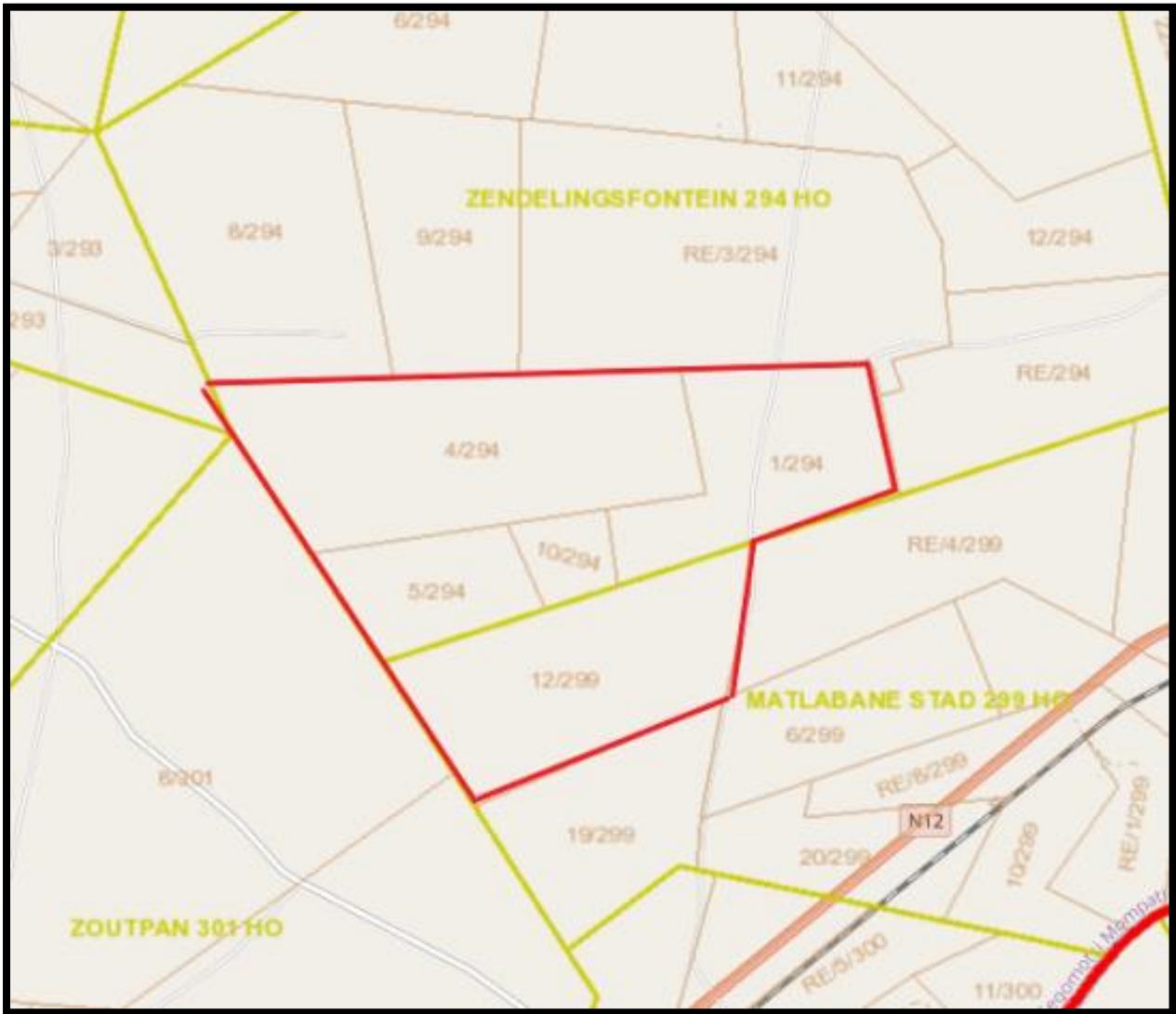
Palmietfontein:



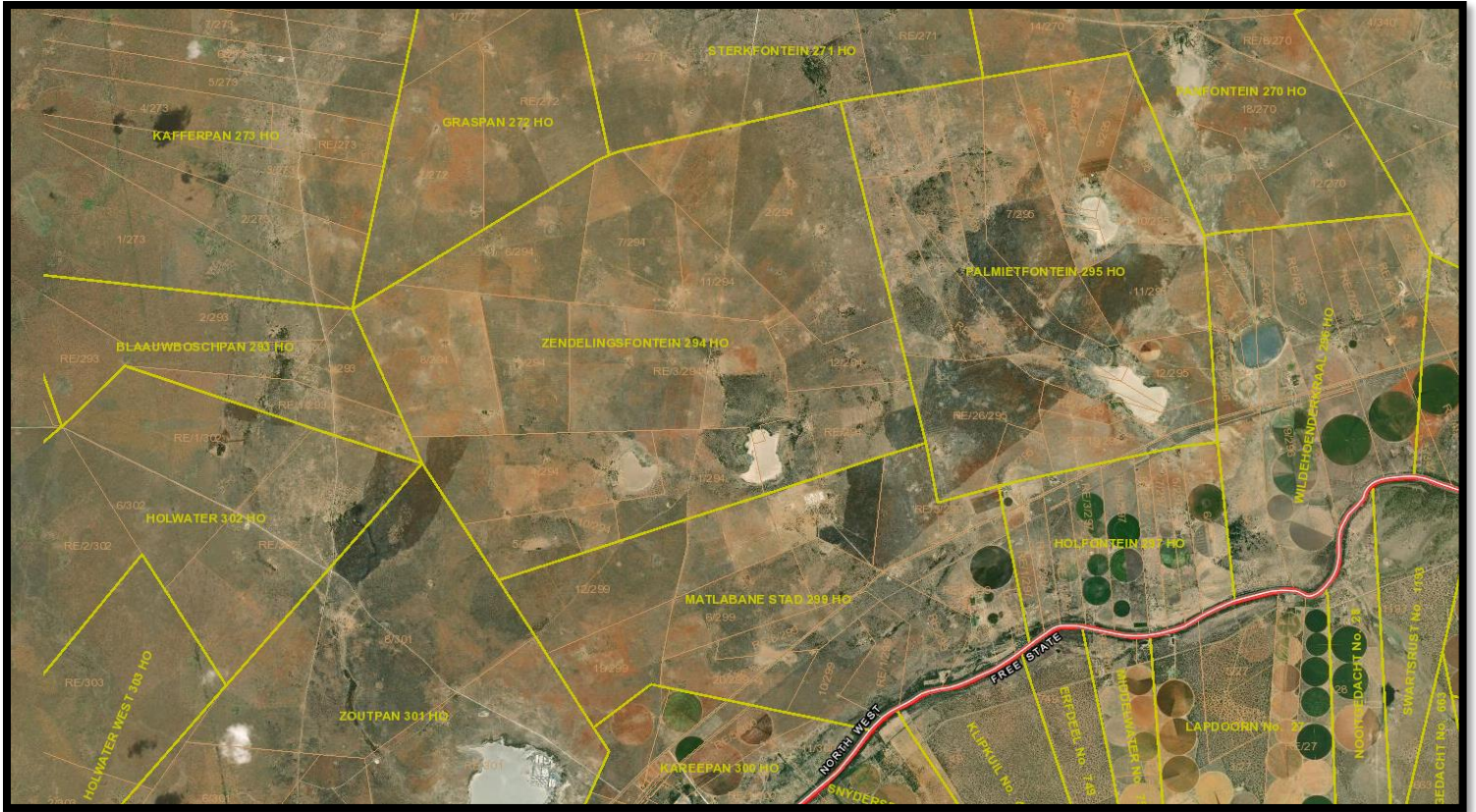
1. RE of Ptn 5 Farm 295 PALMIETFONTEIN	233.8711Ha
2. Ptn 23 Farm 295 PALMIETFONTEIN	233.9535Ha
3. Ptn 28 Farm 295 PALMIETFONTEIN	107.6680Ha
4. RE of Ptn 21 Farm 295PALMIETFONTEIN	126.8503Ha
<u>Total:</u>	<u>702.3429</u>



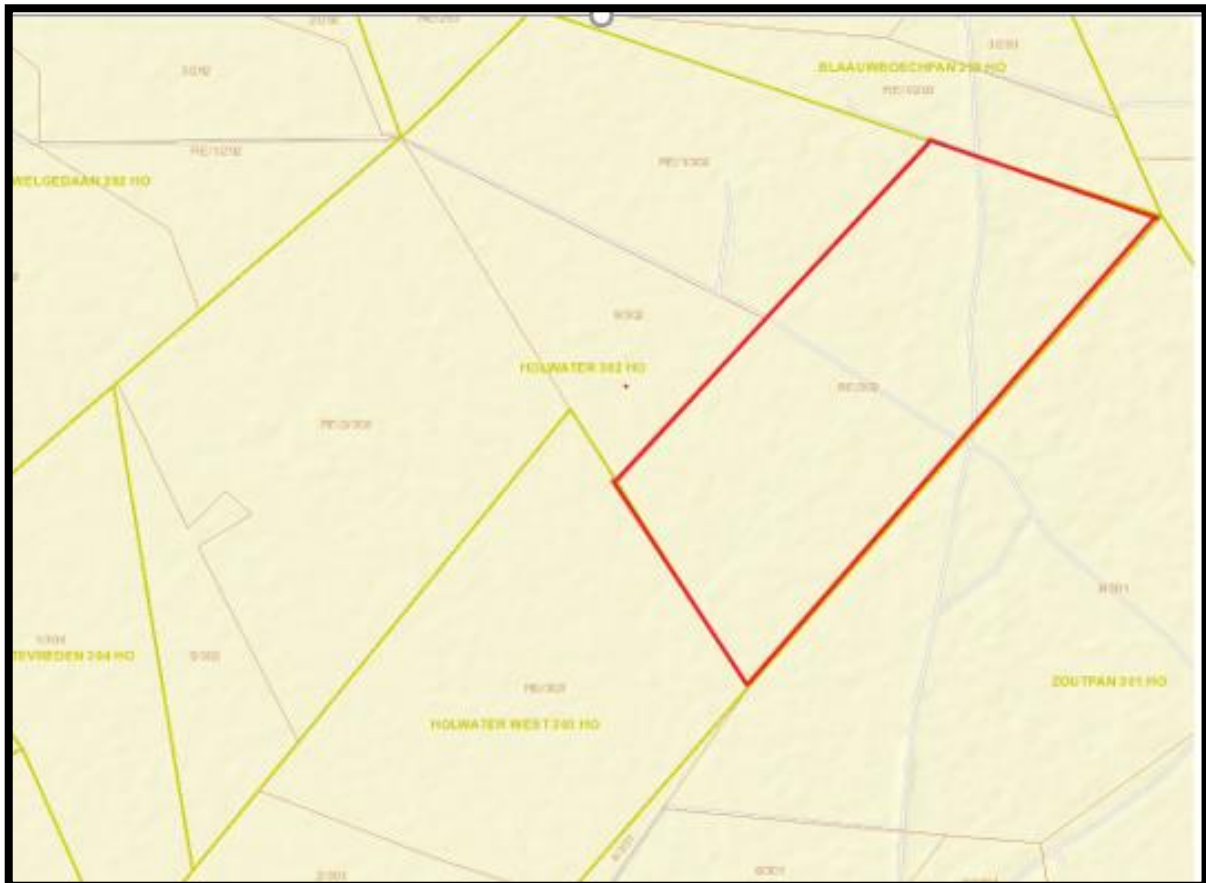
Zendelingsfontein & Matlabane Stad:



1. Ptn 4 Farm 294 ZENDELINGSFONTEIN	532.5602Ha
2. Ptn 5 Farm 294 ZENDELINGSFONTEIN	171.3064Ha
3. Ptn 10 Farm 294 ZENDELINGSFONTEIN	61.3335Ha
4. RE of Ptn 1 Farm 294 ZENDELINGSFONTEIN	299.9202Ha
5. Ptn 12 Farm 299 MATLABANE STAD	409.1673Ha
<u>Total</u>	<u>1474.2876</u>

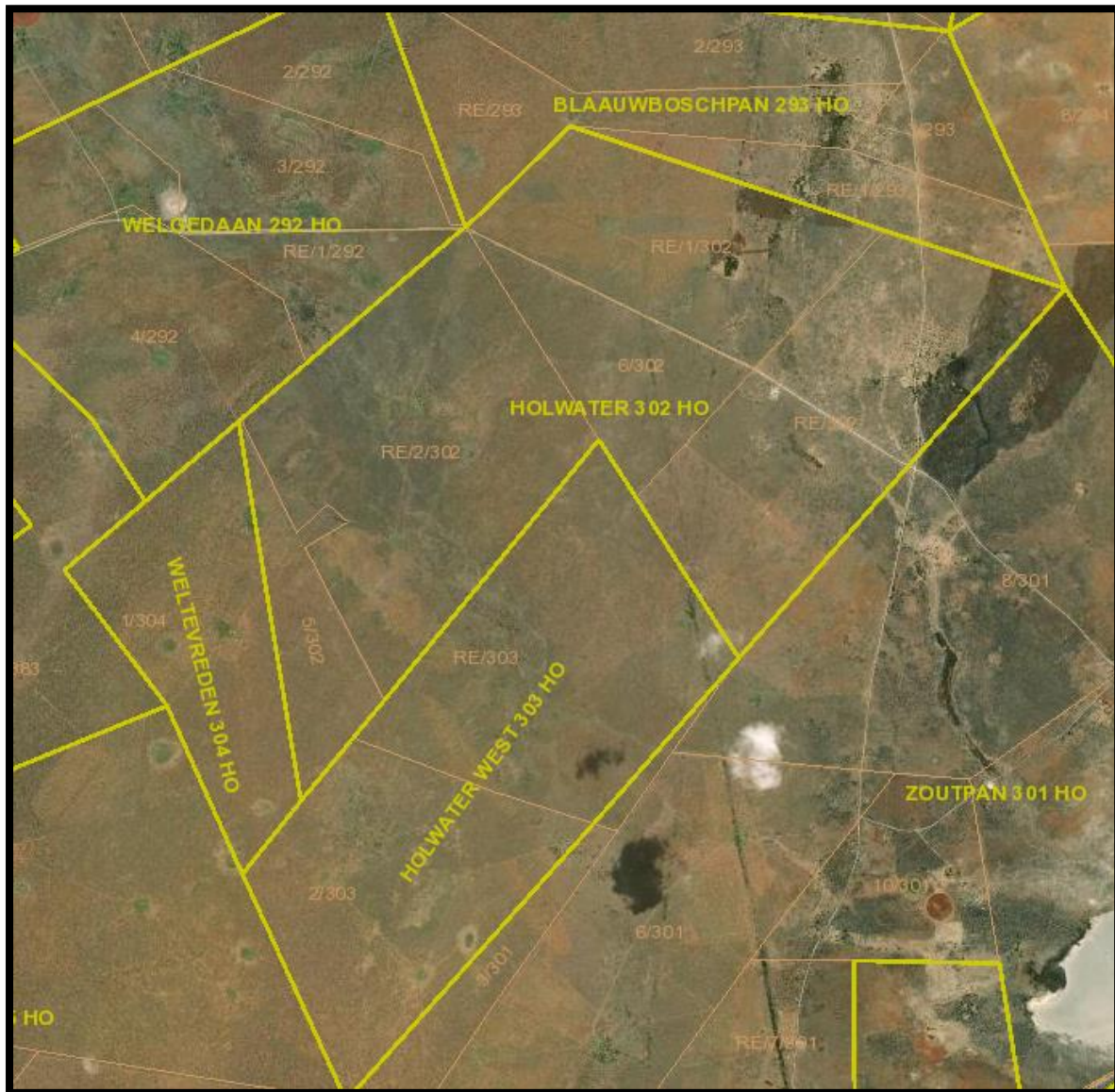


Holwater:

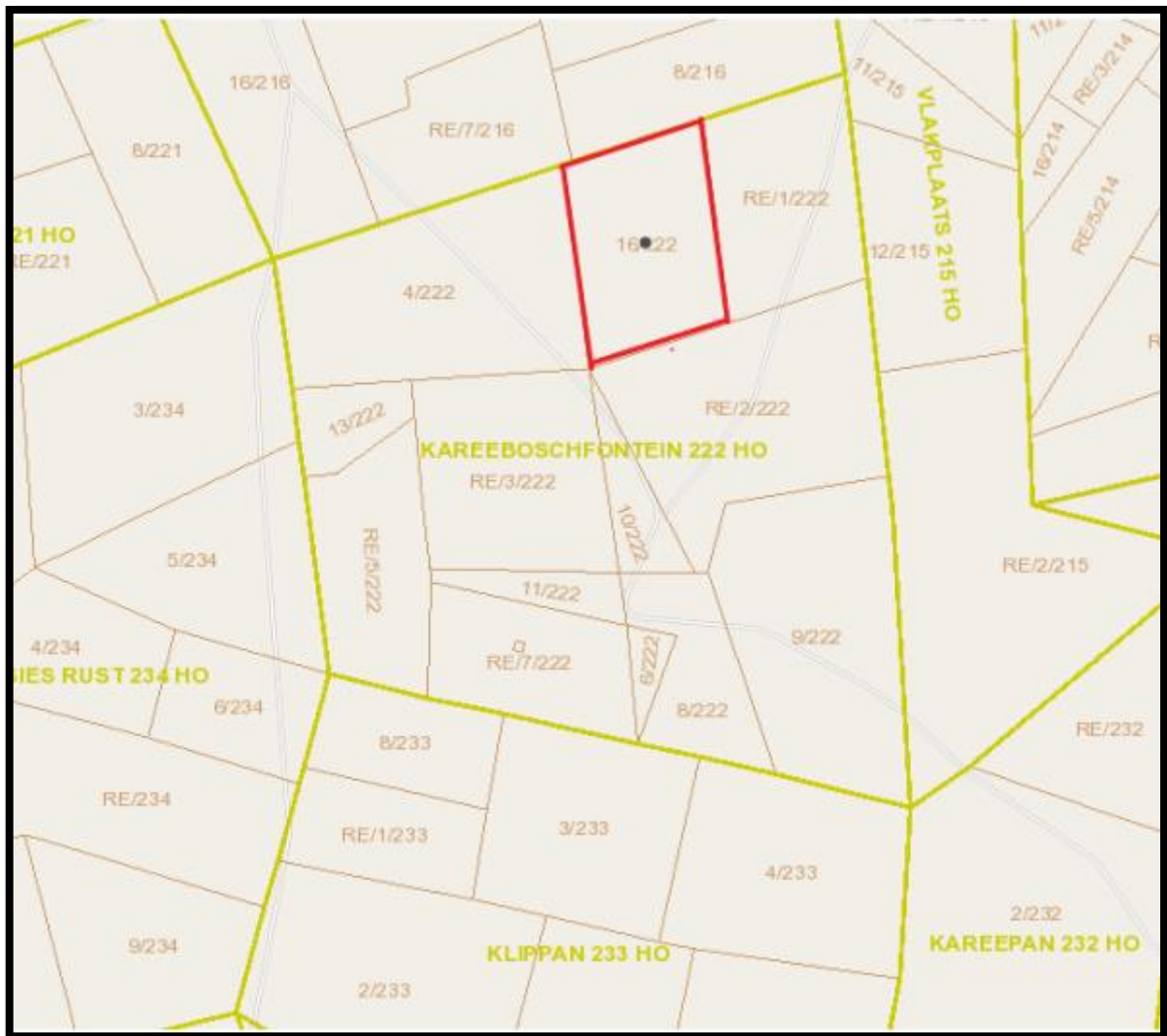


1. RE of Ptn1 Farm 302 HOLWATER

866.1052Ha



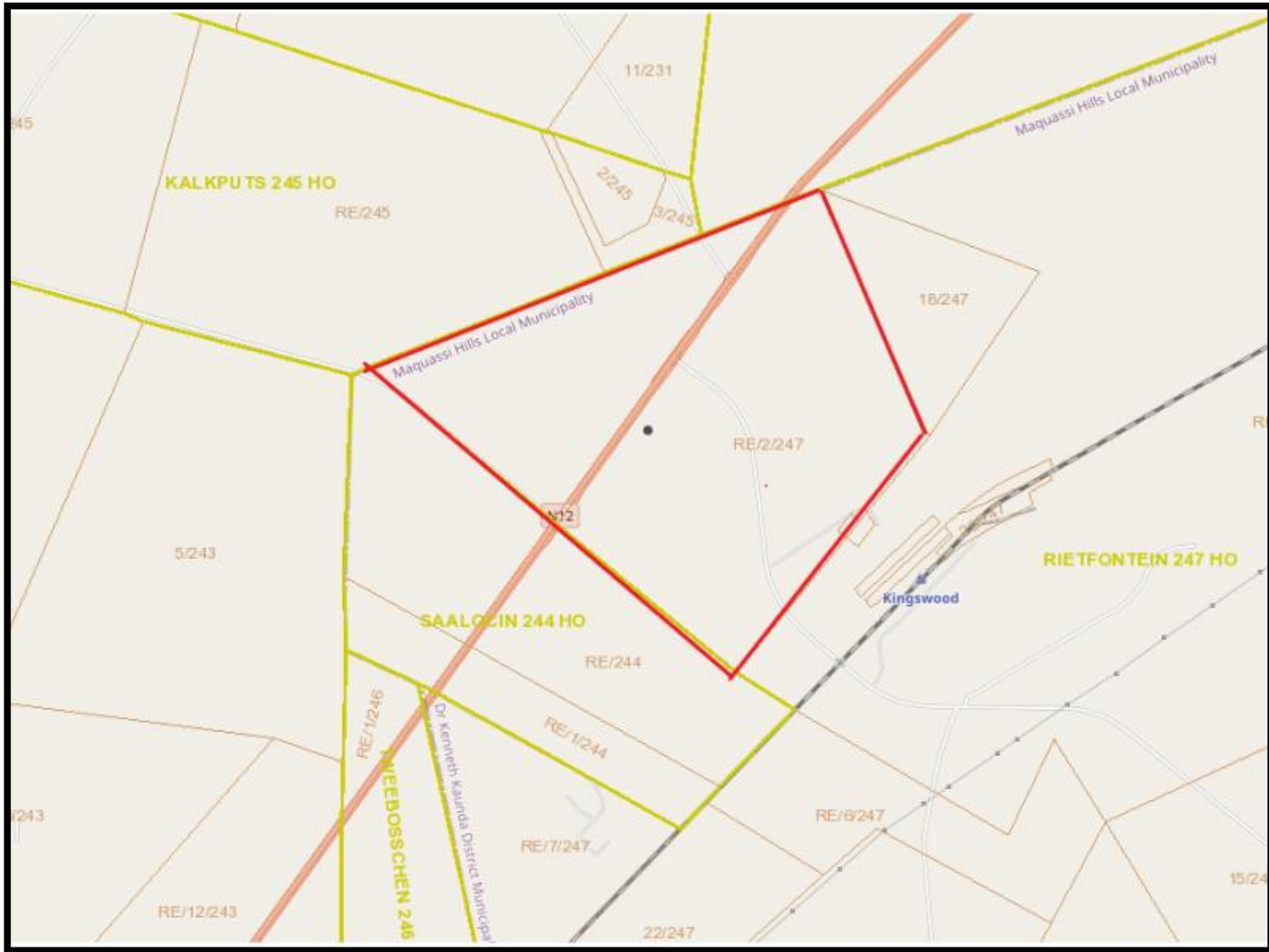
Kareeboschfontein:



1. Ptn 16Farm 222 KAREEBOSCHFONTEIN

292.7983Ha

RIETFontein:



1. RE of Ptn 2 Farm 247 RIETFontein

514.4209Ha

